

Carbon Line Heater

CFLH-40 series



Heat-tech

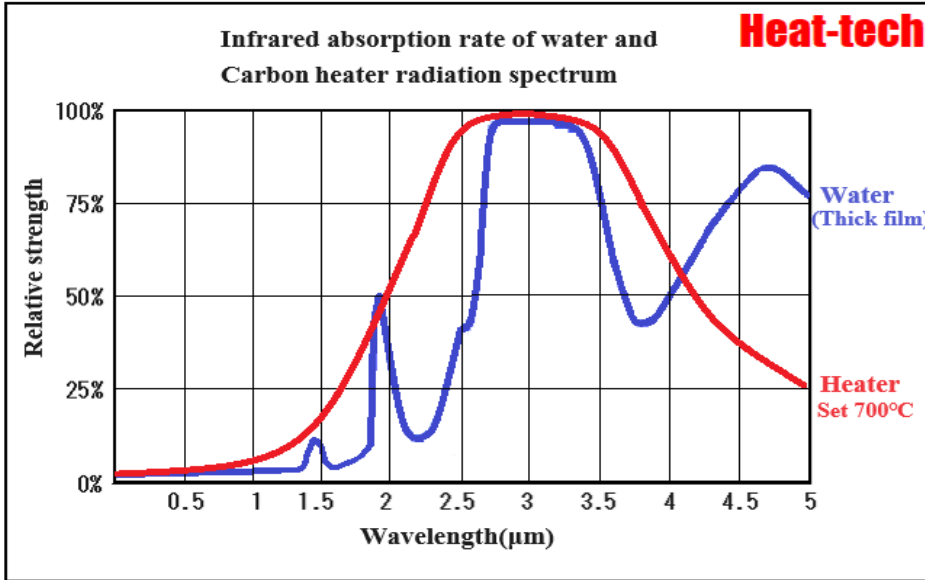
Table of contents

- 1.Features of CFLH-40
2. Focal length and focal width of CFLH-40
3. Temperature rising time of CFLH-40
4. Manual control → HCVD series
5. Automatic temperature control → HHC2 series
- 6.Configuration of CFLH-40
7. Outline drawing of CFLH-40

1.Features of CFLH-40

1.Emits mid-infrared rays close to the absorption wavelength of water

When the heating element temperature is set to 700° C, the peak wavelength of the radiant energy is approximately 3 μ m, making it ideal for heating water droplets, aqueous solutions, and other hydrated compounds.

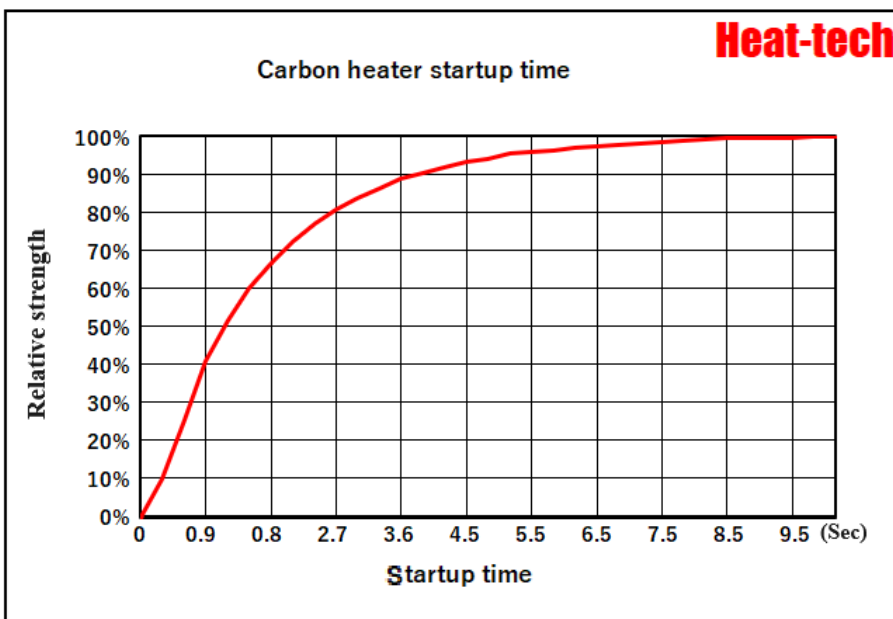


2. Ideal for resin heating

Since it is a carbon fiber heating element derived from a polymer compound, it is good at heating resin.

3. Quick start-up

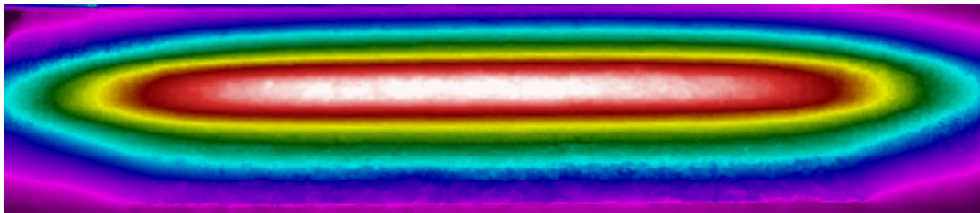
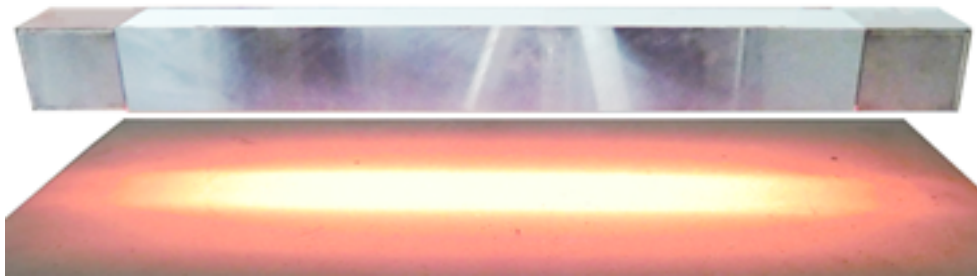
Reaching 80% in just 2.7 second and 100% in 8.5 seconds.



4. Free heating direction

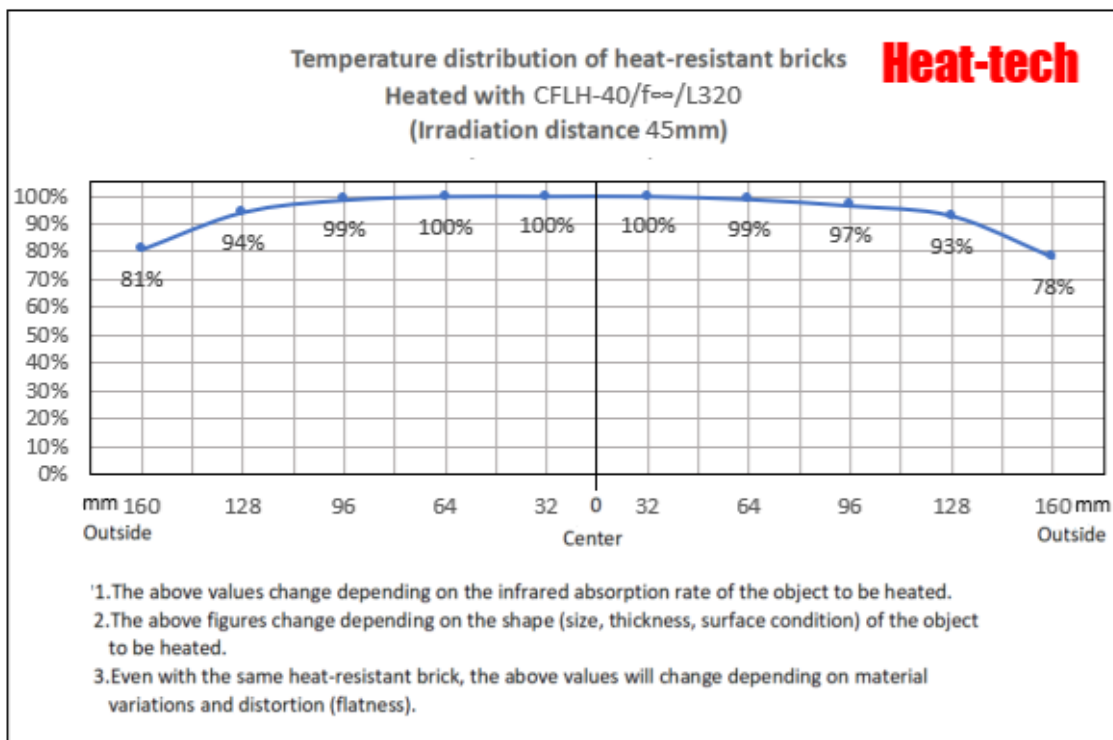
The heating element itself is lightweight and can be lit in any direction, vertically, horizontally or diagonally. Moreover, it has excellent impact resistance.

2. Focal length and focal width of CFLH-40



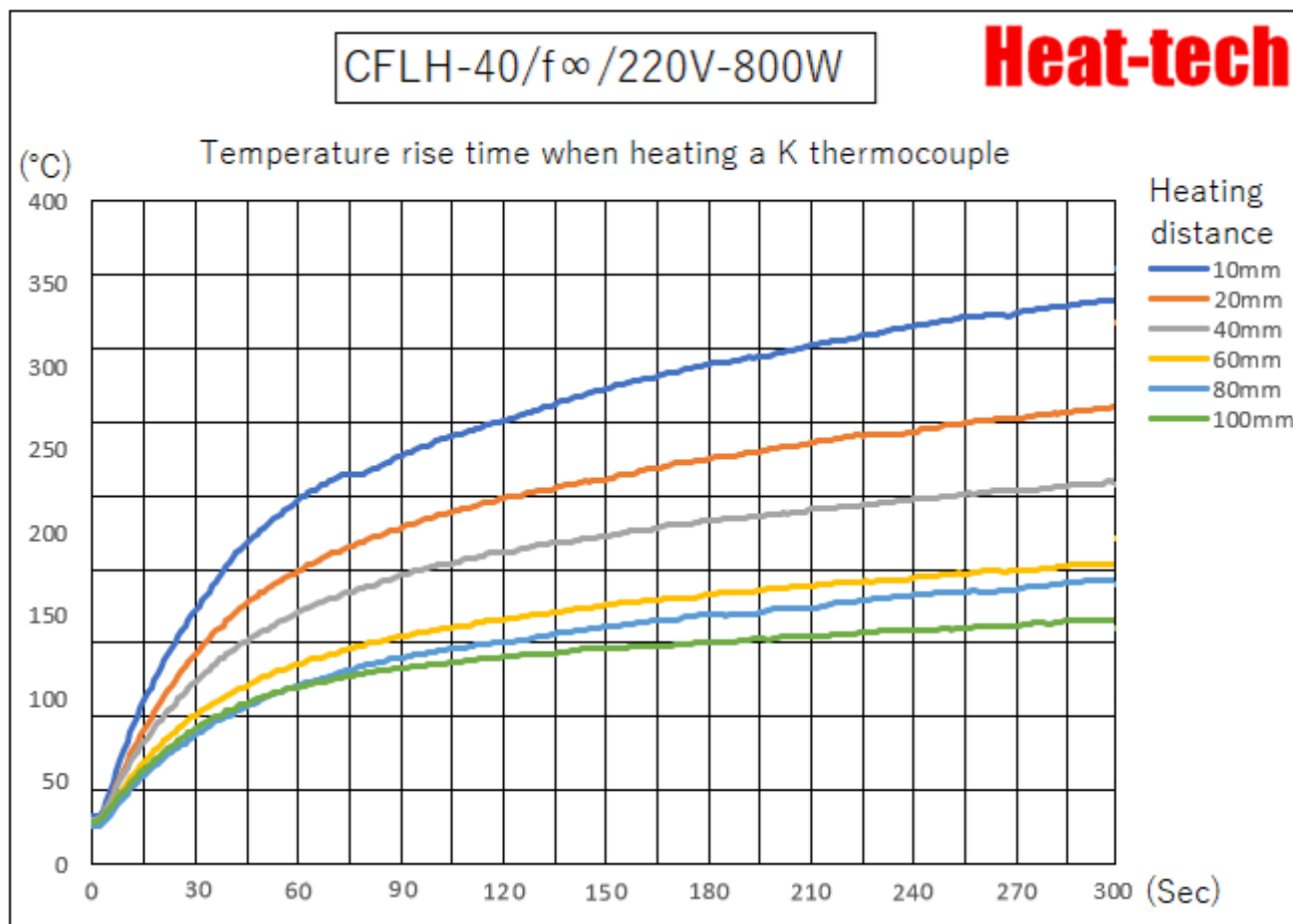
This is a thermal image of heat-resistant brick irradiated from a distance of 45 mm.

The thermal image is divided into 10 by the condenser mirror range (320mmx40mm) of the halogen line heater CFLH-40, Divide the maximum temperature of each divided range by the maximum temperature of the entire range to quantify the temperature distribution of the heat-resistant bricks.



Since the incident heat is dissipated to the outside, the temperature decreases toward the outside.

3. Temperature rising time of CFLH-40



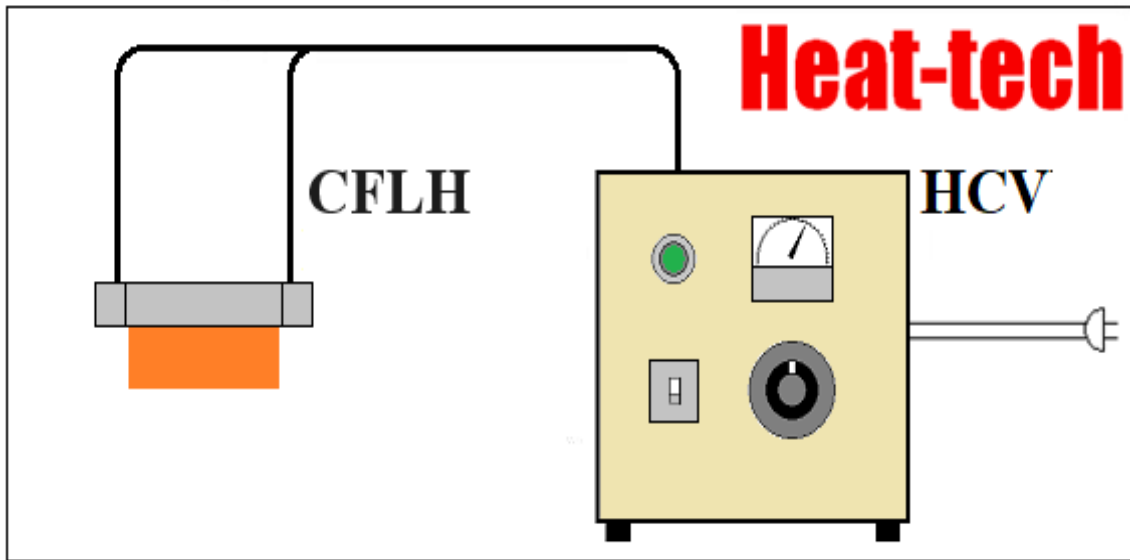
【please note】

In infrared heating, the heating temperature changes depending on the infrared absorption rate of the o

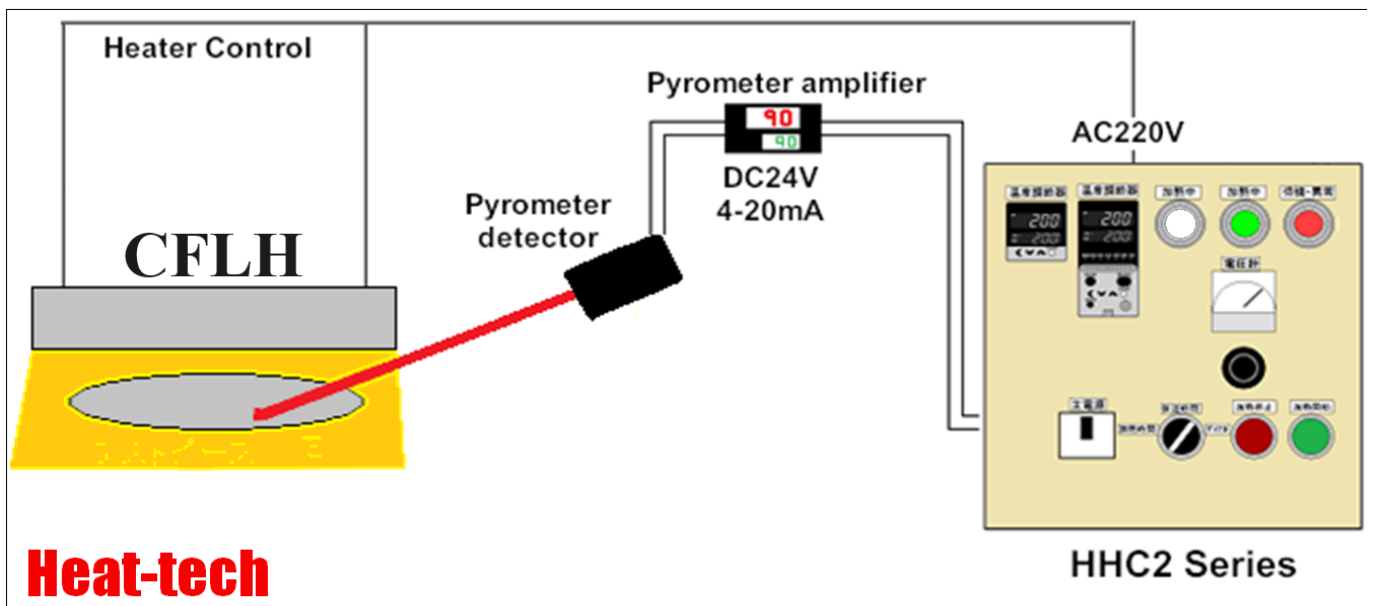
The closer the heating distance, the higher the temperature.

The longer the heating time, the higher the temperature.

4. Manual control → HCVD series



5. Automatic temperature control → HHC2 series



6.Configuration of CFLH-40

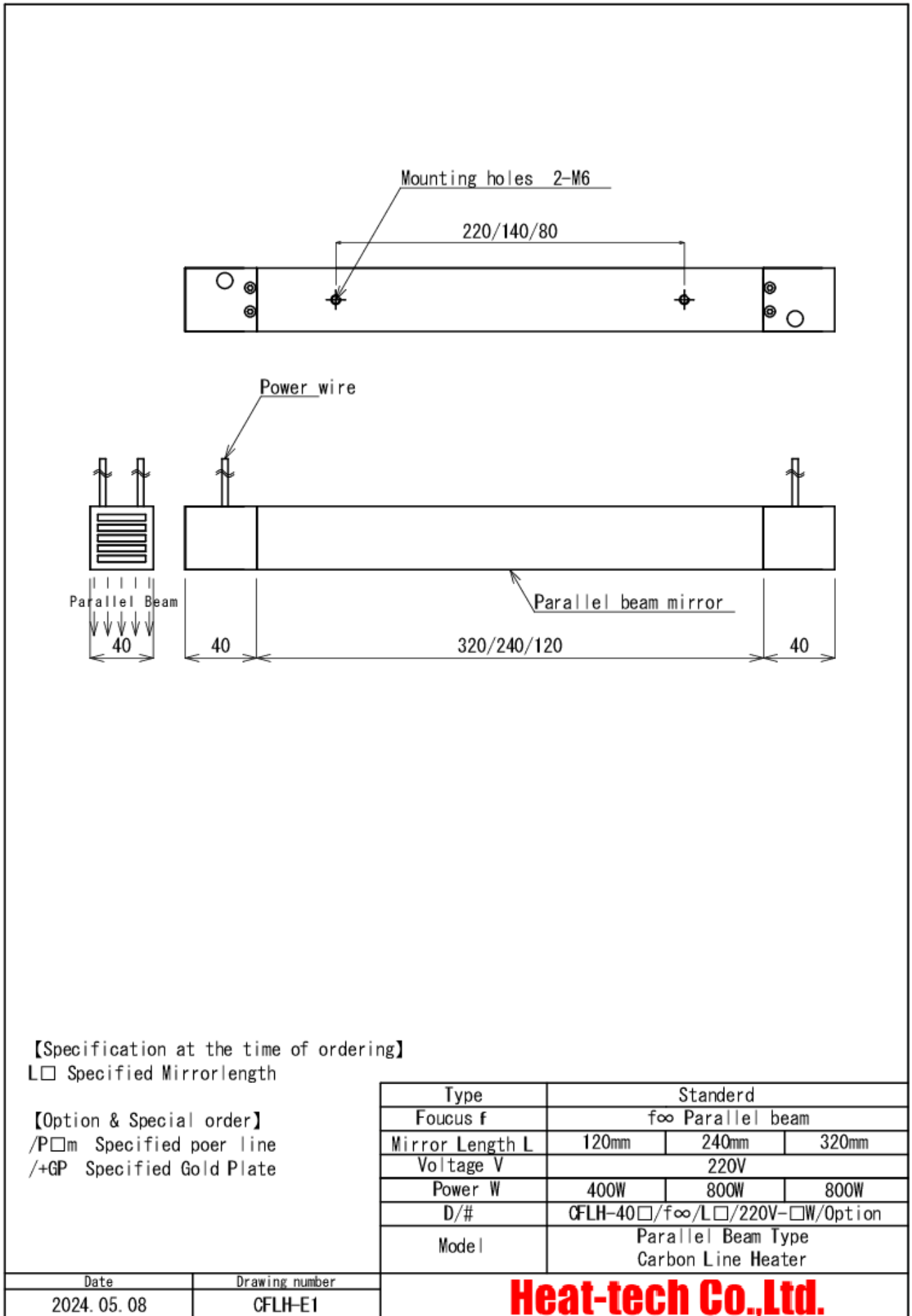
Lamp D/#	mirror Length	Volts-Watts	Design Life
CFLH-40/f ∞ /L120/220V-400W	120mm	220V-400W	7500h
CFLH-40/f ∞ /L240/220V-800W	240mm	220V-800W	7500h
CFLH-40/f ∞ /L320/220V-800W	320mm	220V-800W	7500h

Parallel mirror D/#	mirror Length	Focus	Cooling Type
CFLH-40/f ∞ /L120	120mm	∞	Natural cooling
CFLH-40/f ∞ /L240	240mm		
CFLH-40/f ∞ /L320	320mm		
CFLH-40/f ∞ /L□	Please contact us		

Spare lamp D/#	mirror Length	Volts-Watts	Design Life
CFLH-40/L120/220V-400W	120mm	220V-400W	7500h
CFLH-40/L240/220V-800W	240mm	220V-800W	7500h
CFLH-40/L320/220V-800W	320mm	220V-800W	7500h

Options	Items
/P□	Power wire specified length
GP	Gold plated paraller mirror

7. Outline drawing of CFLH-40



Heat-tech Co.,Ltd.

No-touch High Temperatures Hating

Heat-tech

Heat-tech Co., Ltd.

<https://heater.heat-tech.biz/>

International Medical Device Alliance IMDA

1-6-5 Minatojima Minamimachi Chuoku Kobe 650-0047 Japan

TEL 81-78945-7894 FAX 81-78945-7895

E-mail info@heat-tech.biz