

FAST HEATING

Halogen Double-Sided Heater

HDSH Series



Heat-tech

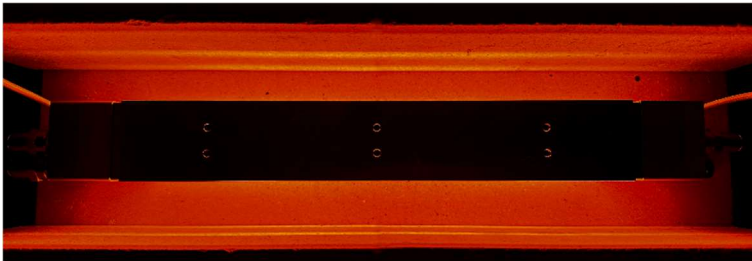
1st edition

Features

1. Both sides can be heated with one heater.

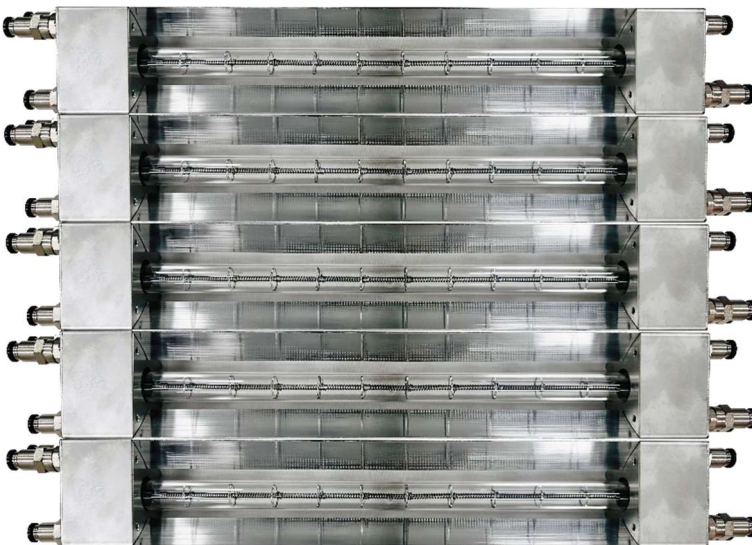
A halogen lamp is built into the center of the heater, and a condensing mirror is designed to heat both sides.

Installed between the objects to be heated using the residual heat of the mold, etc., it is possible to heat both sides with one heater. Since it can be heated with one unit, it is possible to reduce weight and save energy.



2.Can be connected and used on multiple units.

Multiple heaters can be used in line according to the object to be heated.



3.The rise time of the heater is a few seconds.

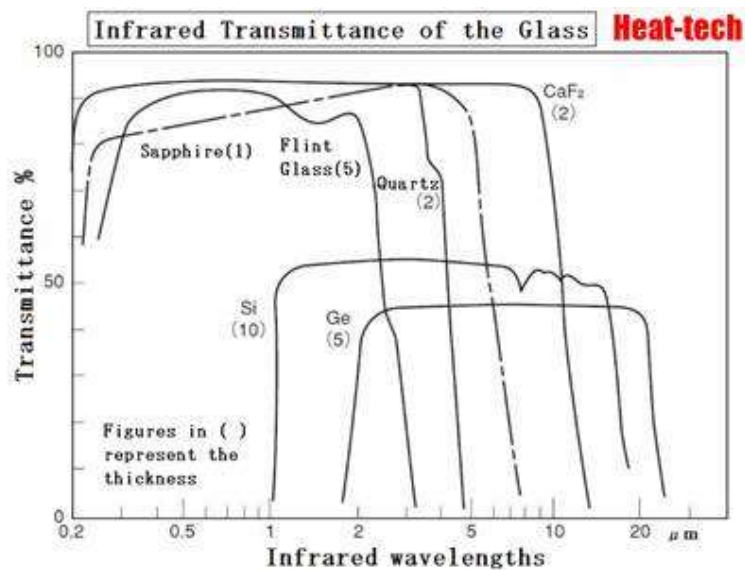
The heating element uses a halogen lamp, so the rise time is very fast.

4. Suitable for heating metals.

It is ideal for heating metals because it irradiates short wavelengths suitable for heating metals.

5. Heating can be done through the glass.

Silica glass has almost no absorption in the visible light and near-infrared regions, and has a transmittance of 93%. There is only 7% reflection. Heating work can be performed through glass, even in vacuum or in an inert gas atmosphere.



6.High precision temperature control is possible.

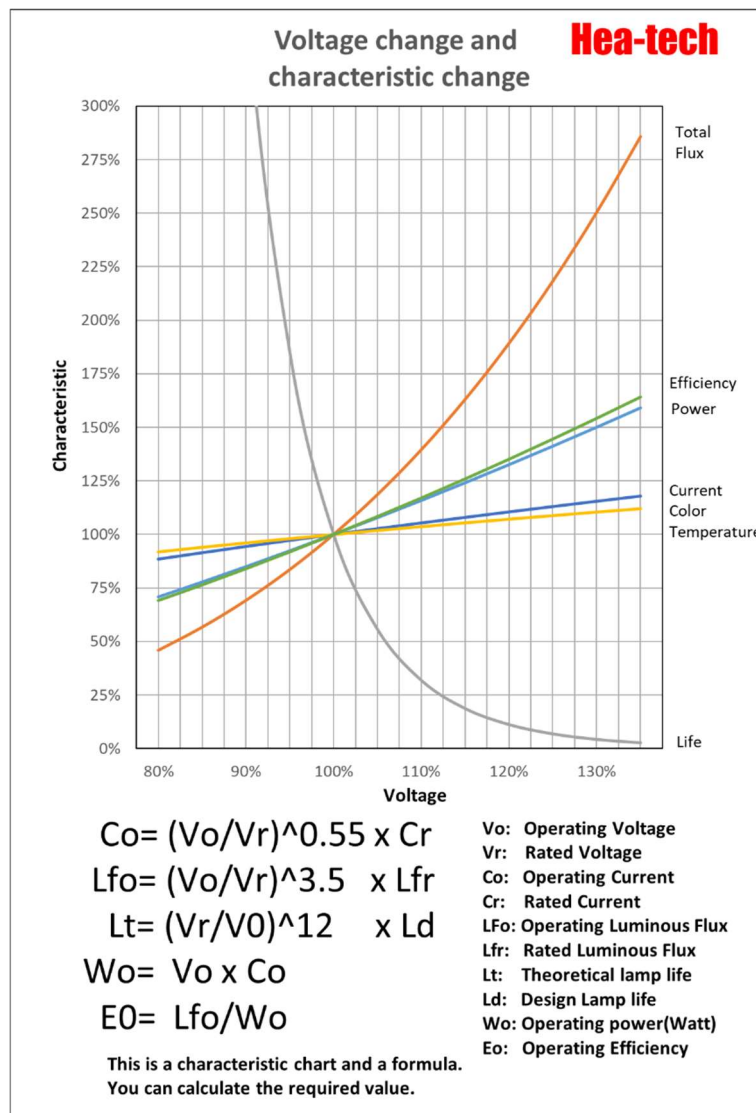
The temperature can be controlled arbitrarily from room temperature to maximum temperature by changing the supply voltage. The power supply voltage and output of the lamp can be designed as desired, but the maximum output is about 5kw.

7.It's clean.

Non-contact heating with light allows completely clean heating.

8.It can also have a longer lifespan.

Lamp life can be controlled arbitrarily from normal life to long life by changing the supply voltage.



9. Excellent safety.

This heating device is relatively safe for the human body.

Since it is made of quartz glass, it does not generate dust or gas, allowing you to work comfortably.

In addition, in the event of a problem, the heater cools down quickly, reducing the risk of ignition of the heated object.

10. Custom orders available.

Custom orders can be made to suit your desired width and length.

Specification

HDSH-60 series

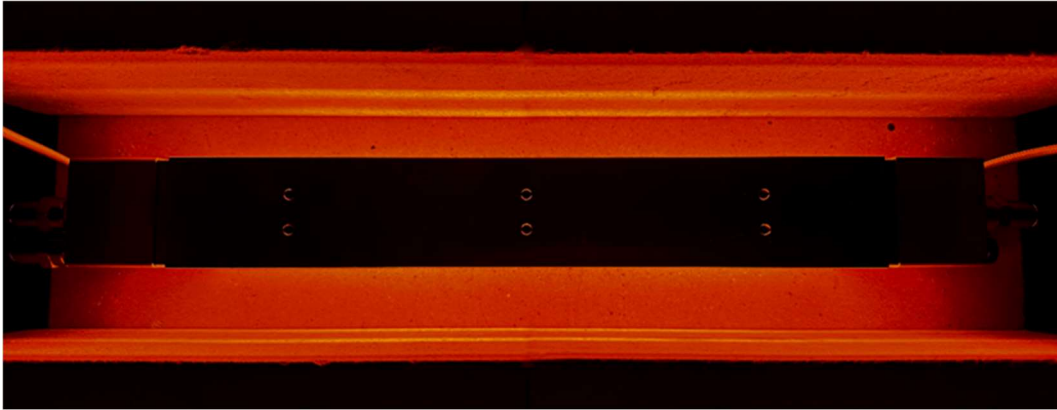


Parallel Mirror D/#	Mirror Length	Focus	Cooling Type
HDSH-60W/f ∞ /L280	280mm	∞	Water cooling

Lamp D/#	Mirror Length	Volt-Power	Design Life
HDSH-60W/L280/200V-2kW	280mm	200V-2kW	4000 h
HDSH-60W/L280/200V-3kW	280mm	200V-3kW	1000 h
HDSH-60W/L280/200V-5kW	280mm	200V-5kW	1000 h

Options	Items
P <input type="checkbox"/> m	Power wire <input type="checkbox"/> m Specified length
(+V)	Vertical lamp
GP	Gold plated parallel mirror

Temperature distribution

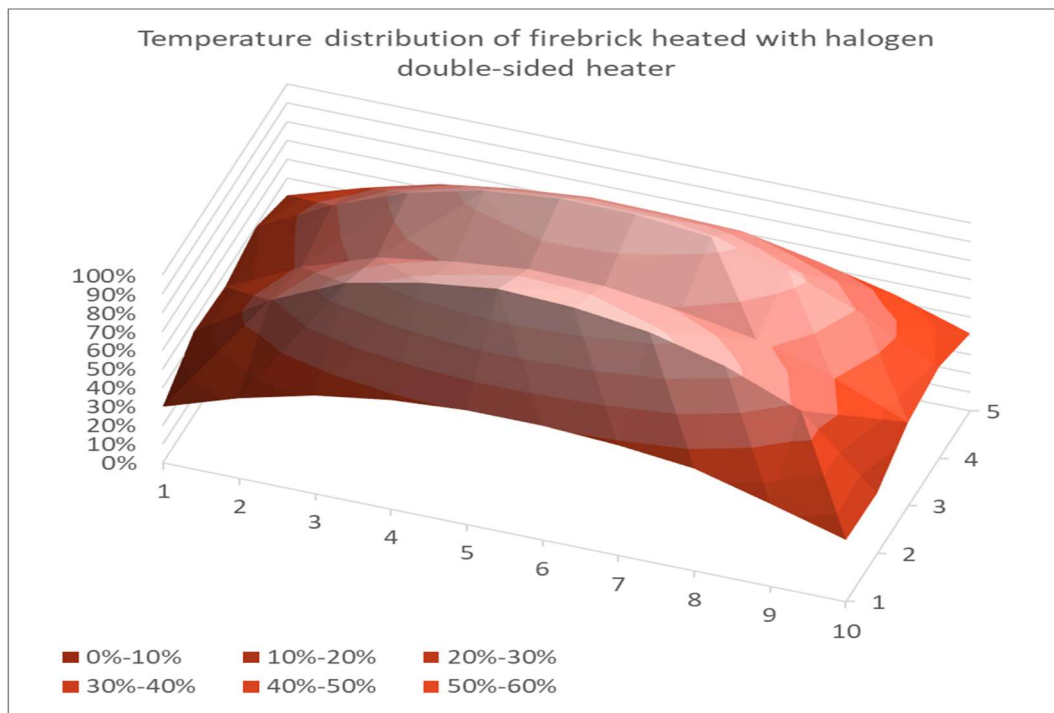


The photo below is a thermal image obtained when a heat-resistant brick was irradiated from a distance of 30 mm.

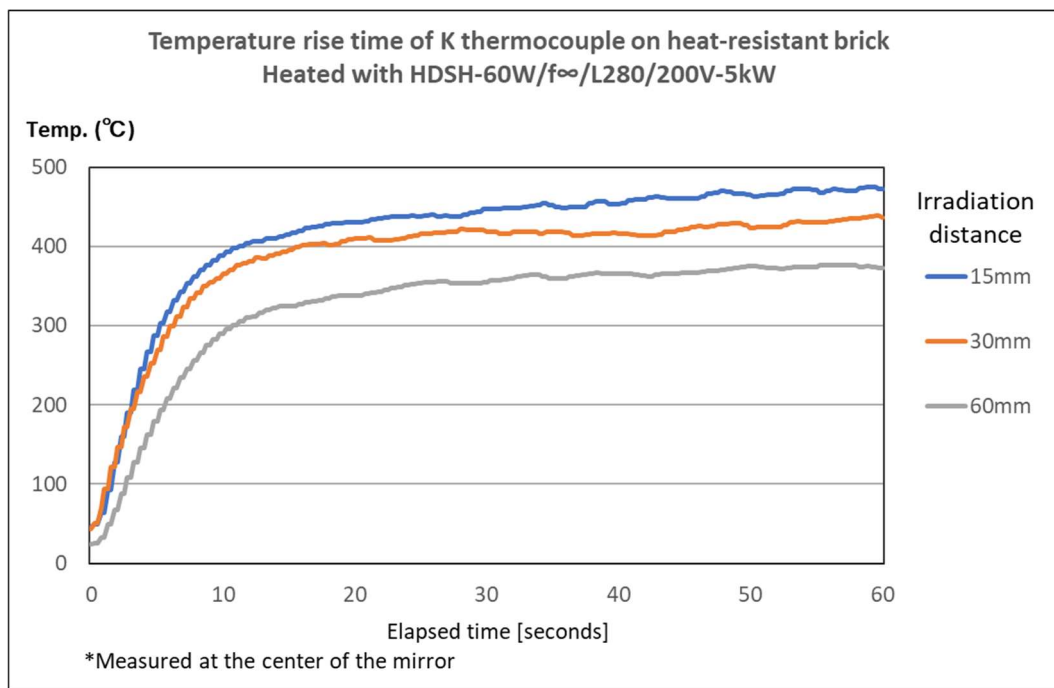


The graph below shows the temperature at 50 locations within the reflector area (280mm x 60mm) obtained from a thermal image.

These temperatures are divided by the maximum temperature to quantify the temperature distribution of the heat-resistant brick.



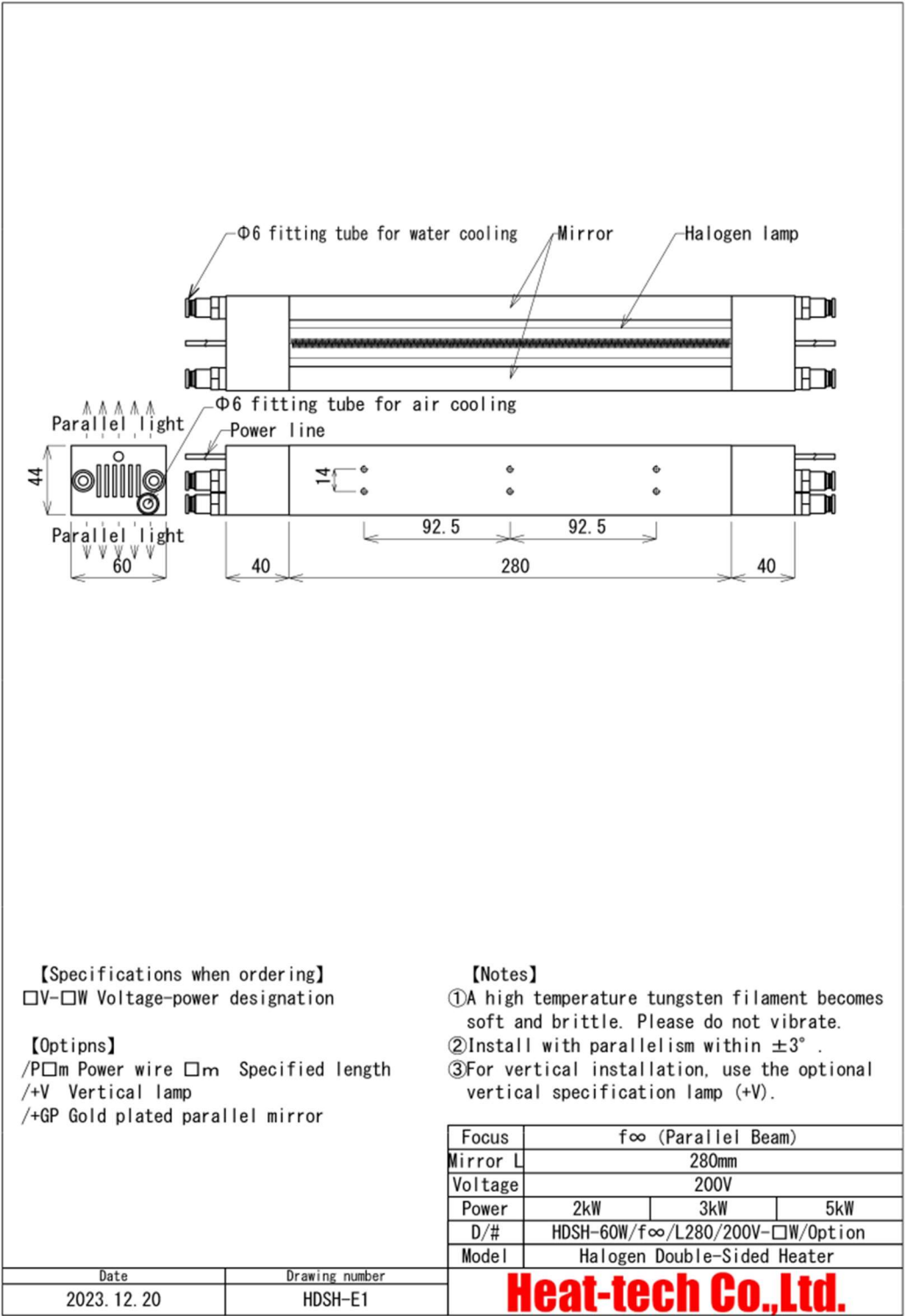
Heating time



【Please note】

In infrared heating, the heating temperature changes depending on the infrared absorption rate of the object.

The longer the heating time, the higher the temperature.



No-touch High Temperatures Hating

Heat-tech

Heat-tech Co., Ltd.

<https://heater.heat-tech.biz/>

International Medical Device Alliance IMDA

1-6-5 Minatojima Minamimachi Chuoku Kobe 650-0047 Japan

TEL 81-78945-7894 FAX 81-78945-7895

E-mail info@heat-tech.biz