

Halogen Line Heater Laboratory - Kit

HLH-60A / f_{∞} - 200v - 2kw + HCV

Easily heating high temperatures!



◆ **Feature** ◆

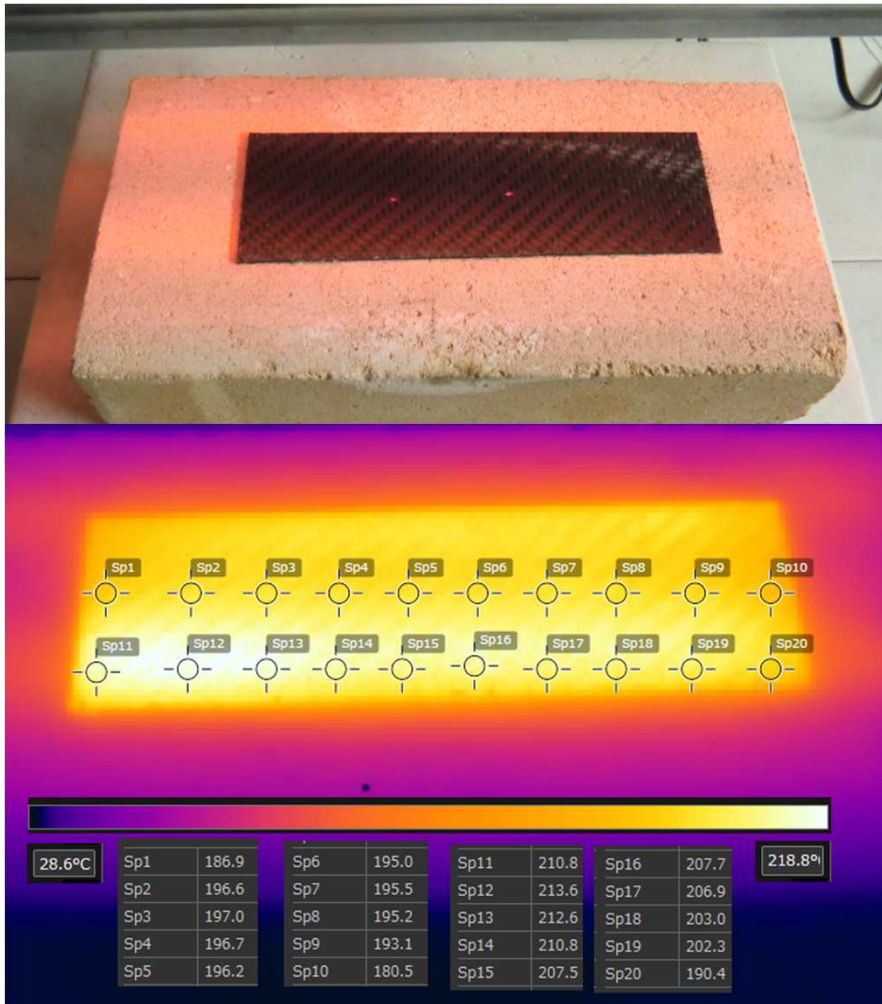
- 1). Easily heating high temperatures by the kit !
- 2). Easily plate heating high temperatures at free range !
- 3). Easily adjusting the radiation area by manual lift!
- 4). Easily changing the heat power (wattage) by slide transformer !
- 5). It is so simple cooling system use cooling fan.

Heat-tech



【 Soldering of metal parts 】

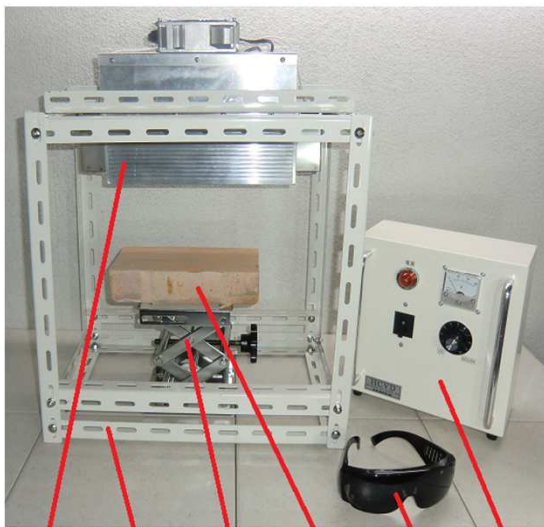
Can be varied to AC0v - AC220v in large volume of manual variable power supply.
 Variable of the electric power is carried out by voltage adjustment, and heating temperature can be adjusted.



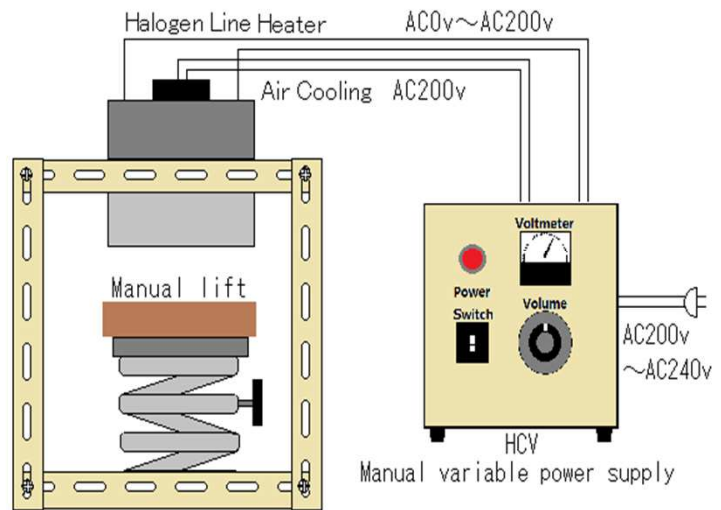
【 Heating of carbon fiber sheet 】

Heating can be uniformly Because it is a parallel light type.

【 Lab-kit Actual wiring diagram 】



① ② ③ ④ ⑤ ⑥



(Example of lab kit assembly.)

(※The lab kit is delivered as individual components.)

- ① Halogen Line Heater HLH-60A/f∞/200v-2kw
The output of 2kw, to line heat the surface of the object.
- ② Cubic test stand
- ③ Manual lift.
- ④ Brick, This is useful when heating the test piece.
- ⑤ Safety glasses against high intensity light
It can visually check the high-intensity irradiation point at maximum output.
- ⑥ Manual variable power supply HCV-AC200-240V/-AC200V-2KW
By varying AC0 - 200v in volume, user can adjust the heating output.

Non-touch High temperature heating

Heat-tech

Heat-tech Co., Ltd.

<https://heater.heat-tech.biz/>

International Medical Device Alliance IMDA

1-6-5 Minatojima Minamimachi Chuoku Kobe 650-0047 Japan

TEL 81-78945-7894 FAX 81-78945-7895

E-mail info@heat-tech.biz