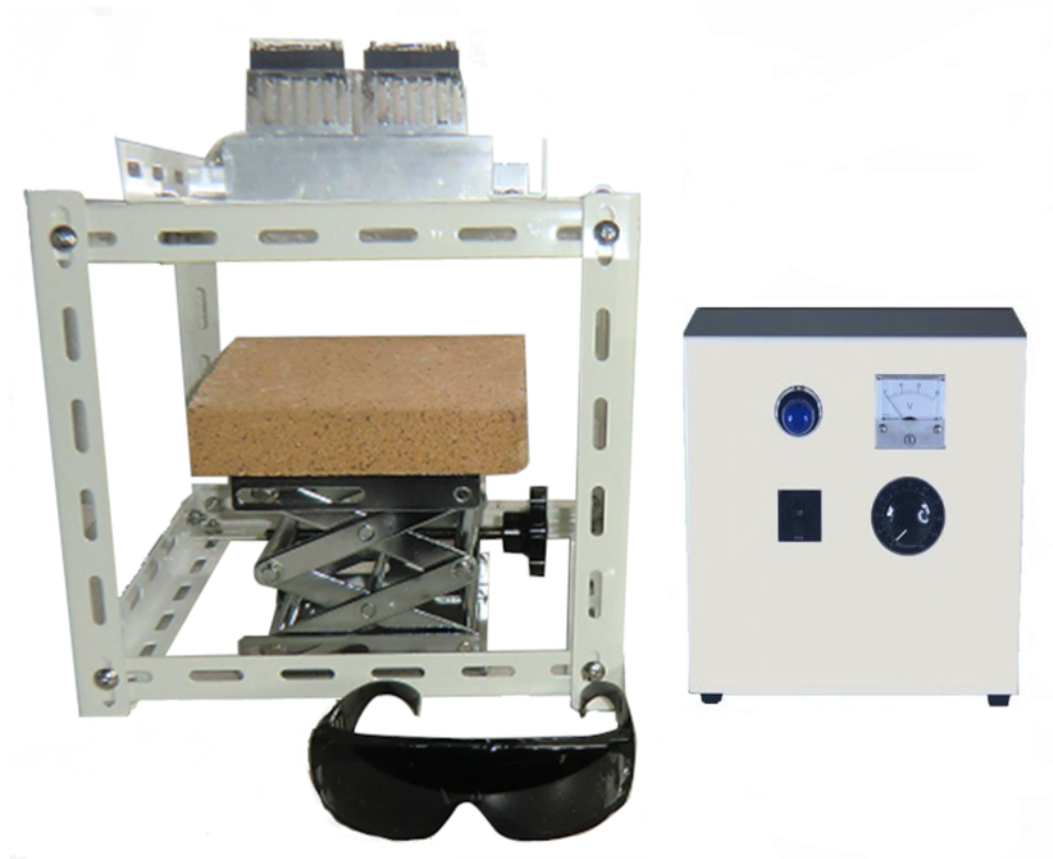


# **Halogen Line Heater Laboratory – kit**

**LKHLH-35A /  $f_{\infty}$  / 100v – 1000w + HCVD**

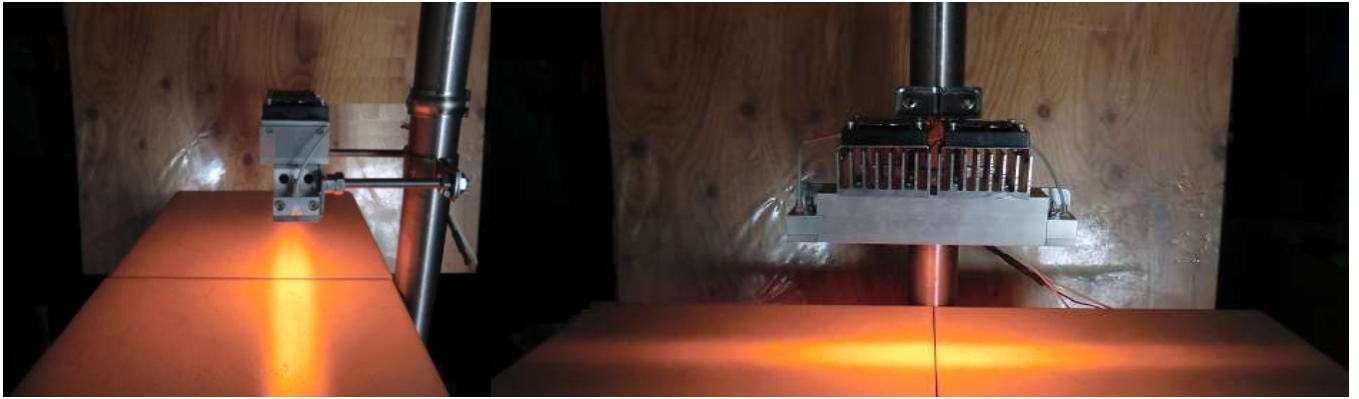
**Easily heating high temperatures!**



## **◆ Feature ◆**

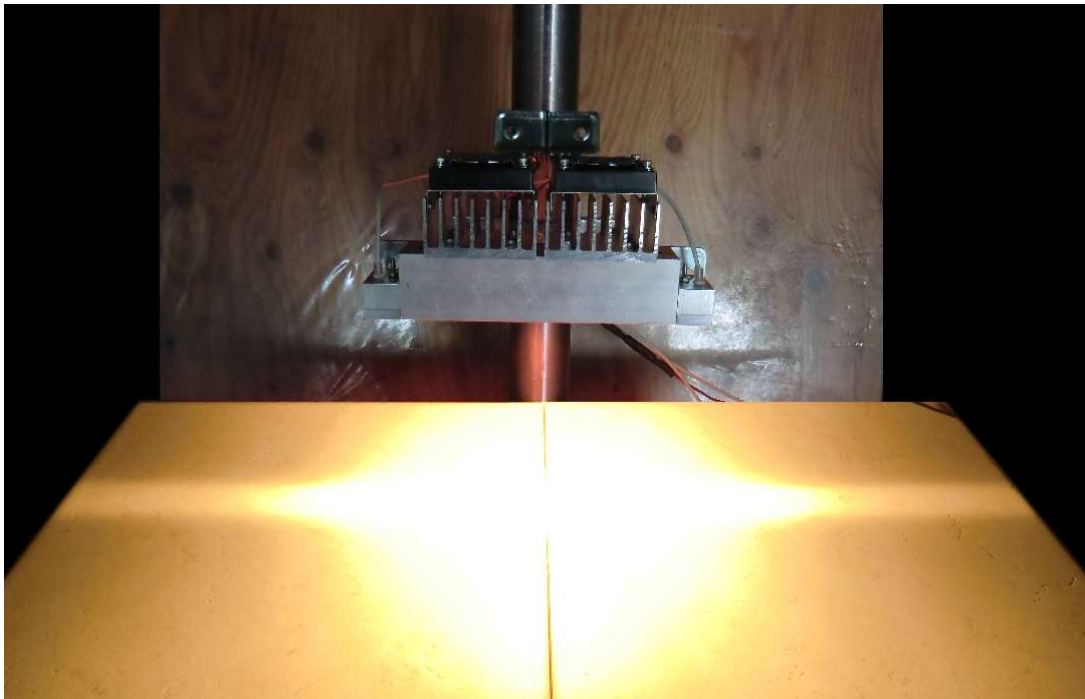
- 1). Easily heating high temperatures by the kit !
- 2). Easily heating high temperatures at free range !
- 3). Easily adjusting the radiation area by manual lift!
- 4). Easily changing the heat power (wattage) by slide transformer !
- 5). It is so simple cooling system use cooling fan.

# **Heat-tech**



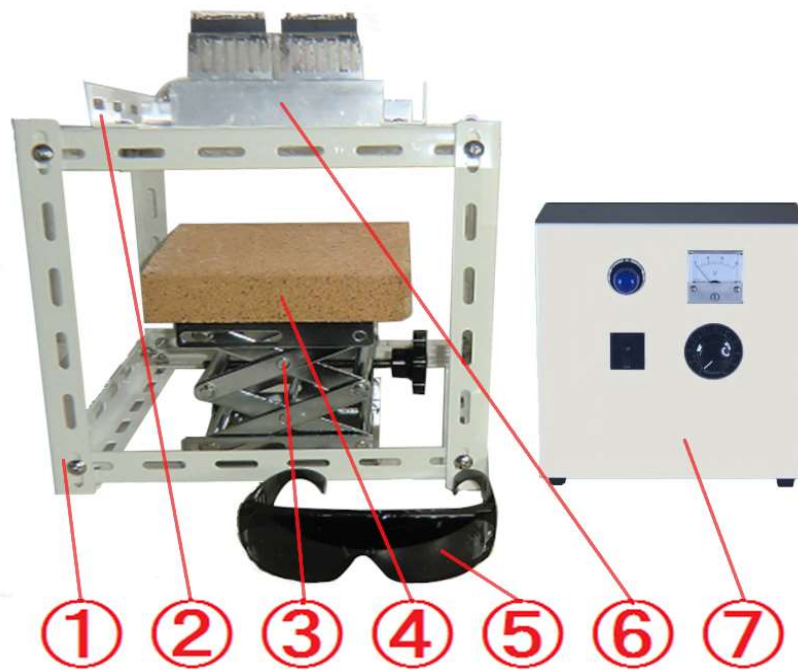
【 Power: 10v-23w 】

Can be varied to AC0v - AC100v in large volume of manual variable power supply.  
Variable of the electric power is carried out by voltage adjustment,  
and heating temperature can be adjusted.  
It is a freely from low to high temperatures.



【 Power: 100v-1000w 】

It shine so very bright emission of heat generation 1000W maximum output.  
Hot surface heating can be simply performed in non-contact.



(Example of lab kit assembly.)

( ※The lab kit is delivered as individual components. )

- ① Cubic test stand
- ② Heater mounting bracket
- ③ Manual lift.
- ④ Brick
- ⑤ Safety glasses against high intensity light

It can visually check the high-intensity irradiation point at maximum output.

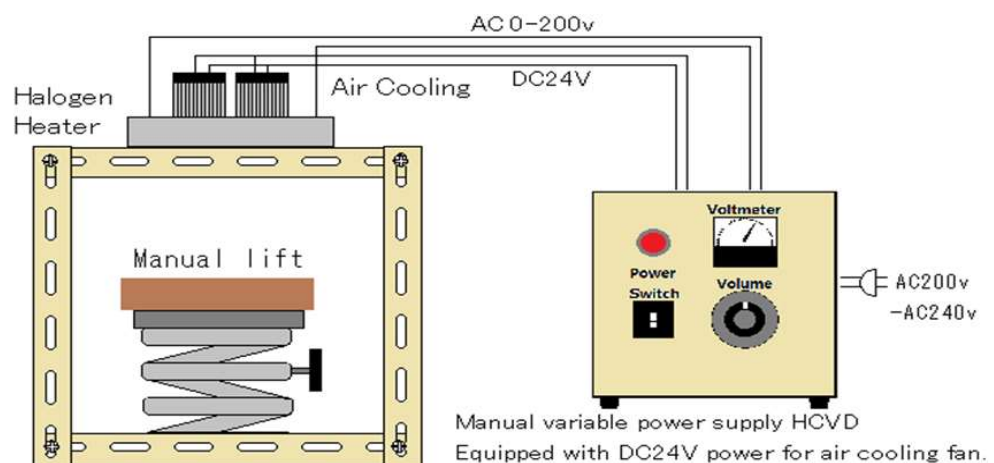
- ⑥ Halogen Line Heater HLH-35A/f $\infty$ /100v-1000w

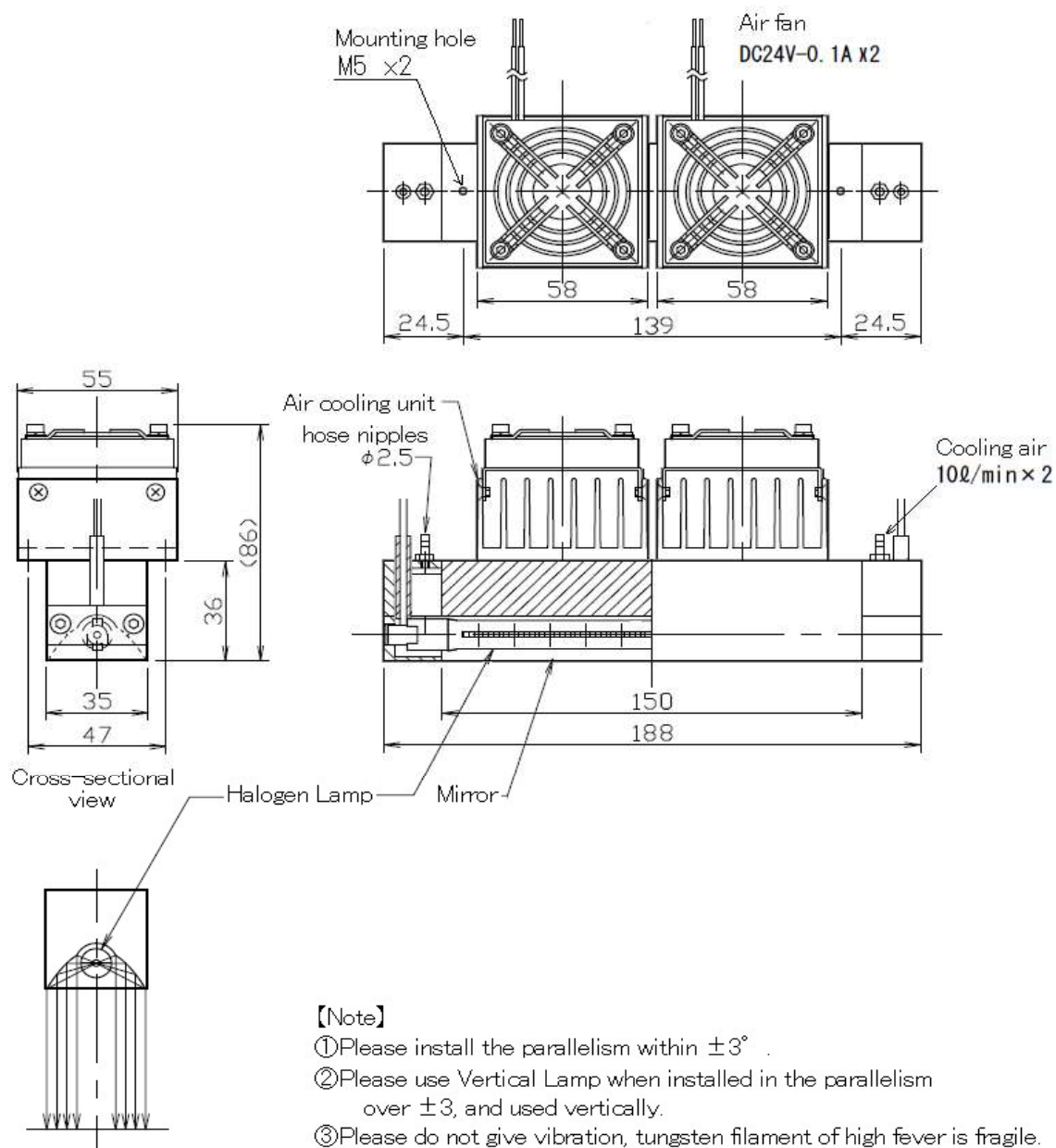
The output of 1kw, to heat the surface of the object.

- ⑦ Manual power controller HCVD-AC200-240V/-AC100V-2KW

By varying the AC200-240v to AC0-100v in volume, user can adjust the heating output.  
Equipped with DC24V power for air cooling fan.

### 【 Lab-kit Actual wiring diagram 】





【Note】

- ① Please install the parallelism within  $\pm 3^\circ$ .
- ② Please use Vertical Lamp when installed in the parallelism over  $\pm 3$ , and used vertically.
- ③ Please do not give vibration, tungsten filament of high fever is fragile.
- ④ Mounting holes will vary depending on length mirror.
- ⑤ Air cooling effect is reduced in the location of the high temperature, at such time please use the HLH-35W Water-cooled type.

【 Option & Special order 】

Heat-resistant glass (+GW))

Quartz glass (+QW)

Specified power (W)

Specified mirror length (L)

Specified power line (/P□m)

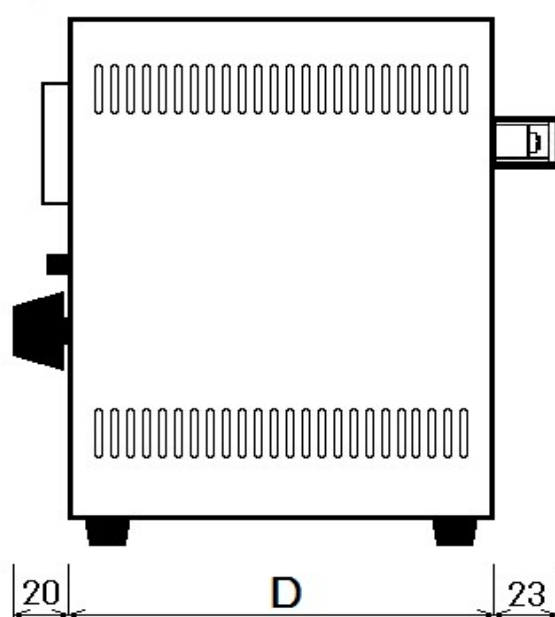
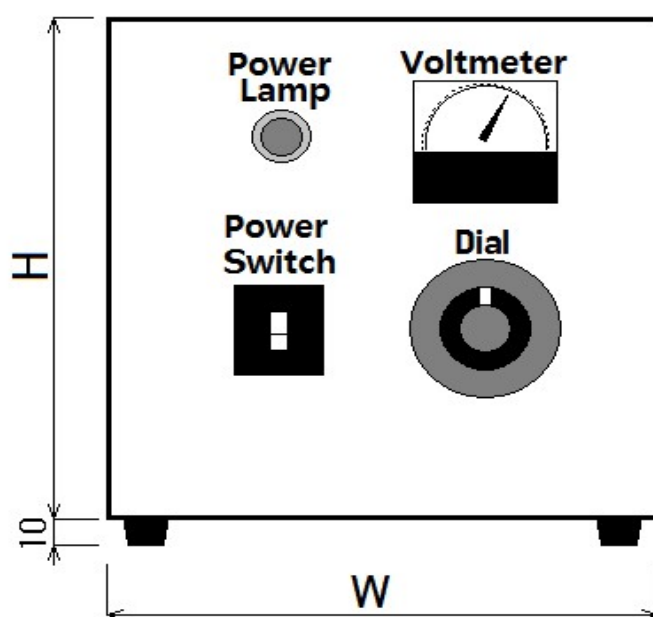
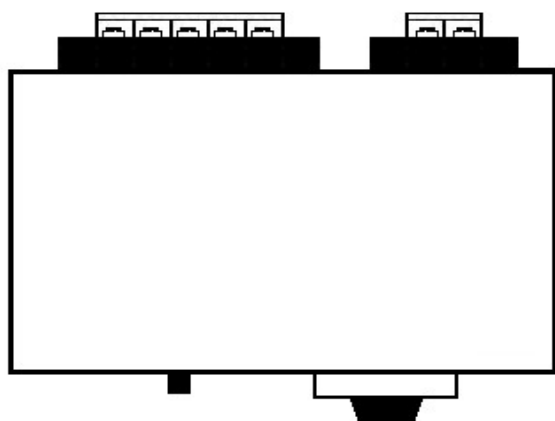
Specified Vertical Lamp (+ V)

Specified Gold Plate(+GP)

Type	Standard
Focus	$f_\infty$ ( Parallel Beam )
Mirror Length (L)	150
Voltage	200v
Power	1kw
D/#	HLH-35A/ $f_\infty$ /L150/200v~1kw/option
Model	Air Cool Parallel Beam Type Halogen Line Heater

Date 2011/7/20 Design Y.Shimoda

**Heat-tech Co.,Ltd.**



Input (V)	AC220V
Output (V)	AC0~200V
Output (W)	5KW
DC Power	DC24V 0.5A
Height (H)	250
Width (W)	250
Depth (D)	120
D/#	HCVD-220V/200V-5kw
Model	DC power supply built-in for air cooling Manual Power Controller for Halogen Heater

Date

2017.4.4

**Heat-tech**

No-touch High Temperatures Hating

# Heat-tech

**Heat-tech Co., Ltd.**

**<https://heater.heat-tech.biz/>**

**International Medical Device Alliance IMDA**

**1-6-5 Minatojima Minamimachi Chuoku Kobe 650-0047 Japan**

**TEL 81-78945-7894 FAX 81-78945-7895**

**E-mail [info@heat-tech.biz](mailto:info@heat-tech.biz)**