

Halogen Line Heater Laboratory – kit

LKHLH-60A / f ∞ / 200v-2kw + HCV

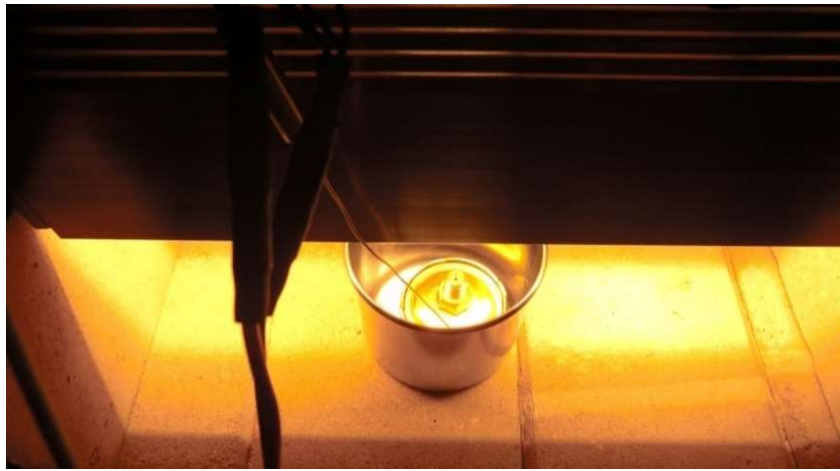
Easily heating high temperatures!



◆ Feature ◆

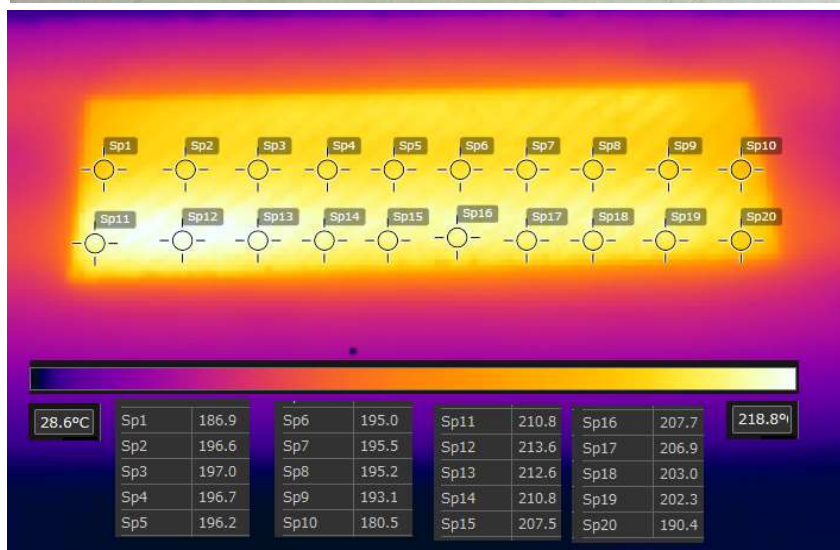
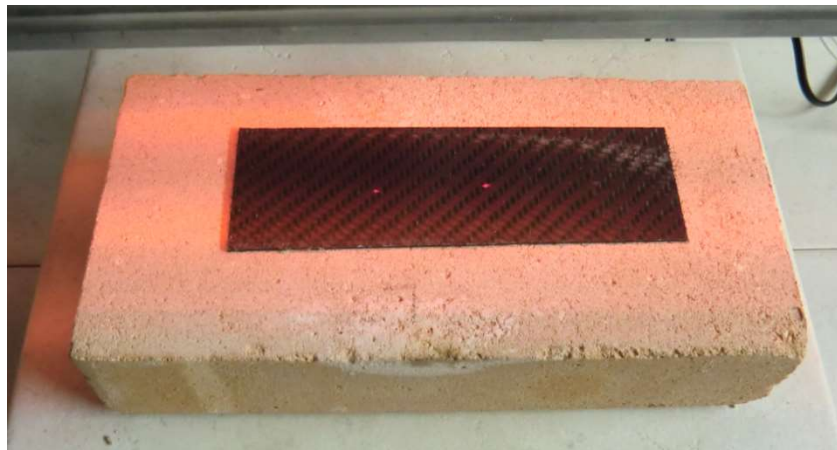
- 1). Easily heating high temperatures by the kit !
- 2). Easily heating high temperatures at free range !
- 3). Easily adjusting the radiation area by manual lift!
- 4). Easily changing the heat power (wattage) by slide transformer !
- 5). It is so simple cooling system use cooling fan.

Heat-tech



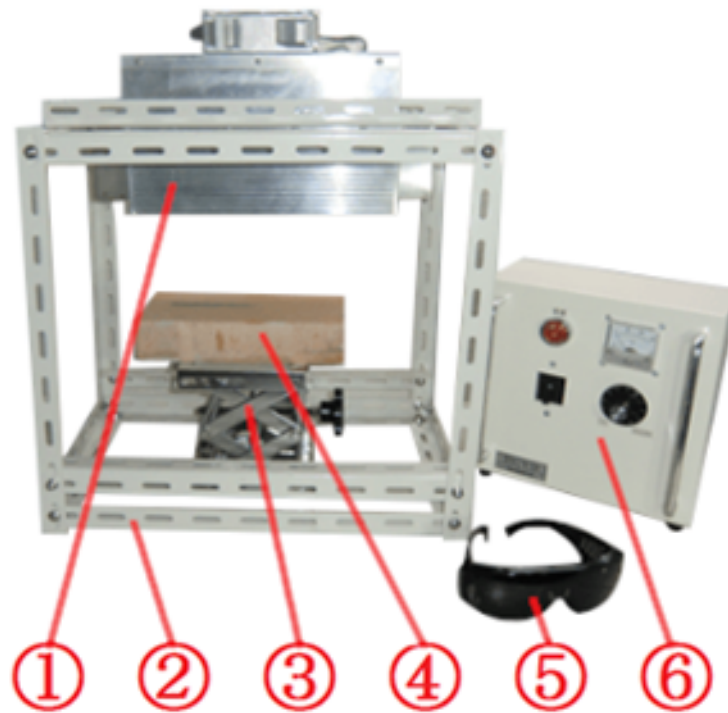
【Line heating of wood】

Can be varied to AC0v - AC200v in large volume of manual variable power supply.
 Variable of the electric power is carried out by voltage adjustment,
 and heating temperature can be adjusted.
 It is a freely from low to high temperatures.



【 Heating of carbon fiber sheet 】

Heating can be uniformly Because it is a parallel light type.

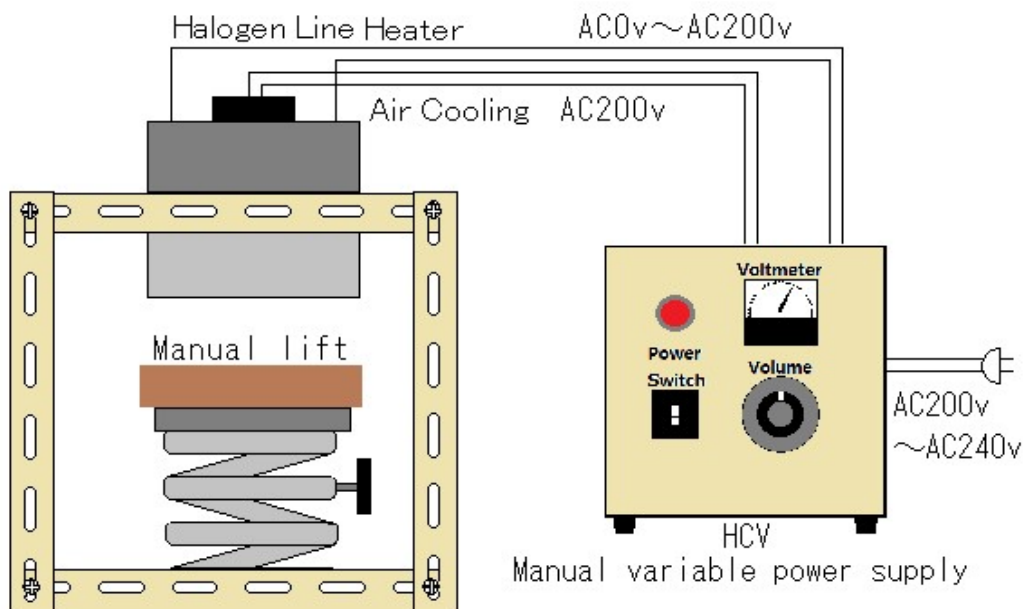


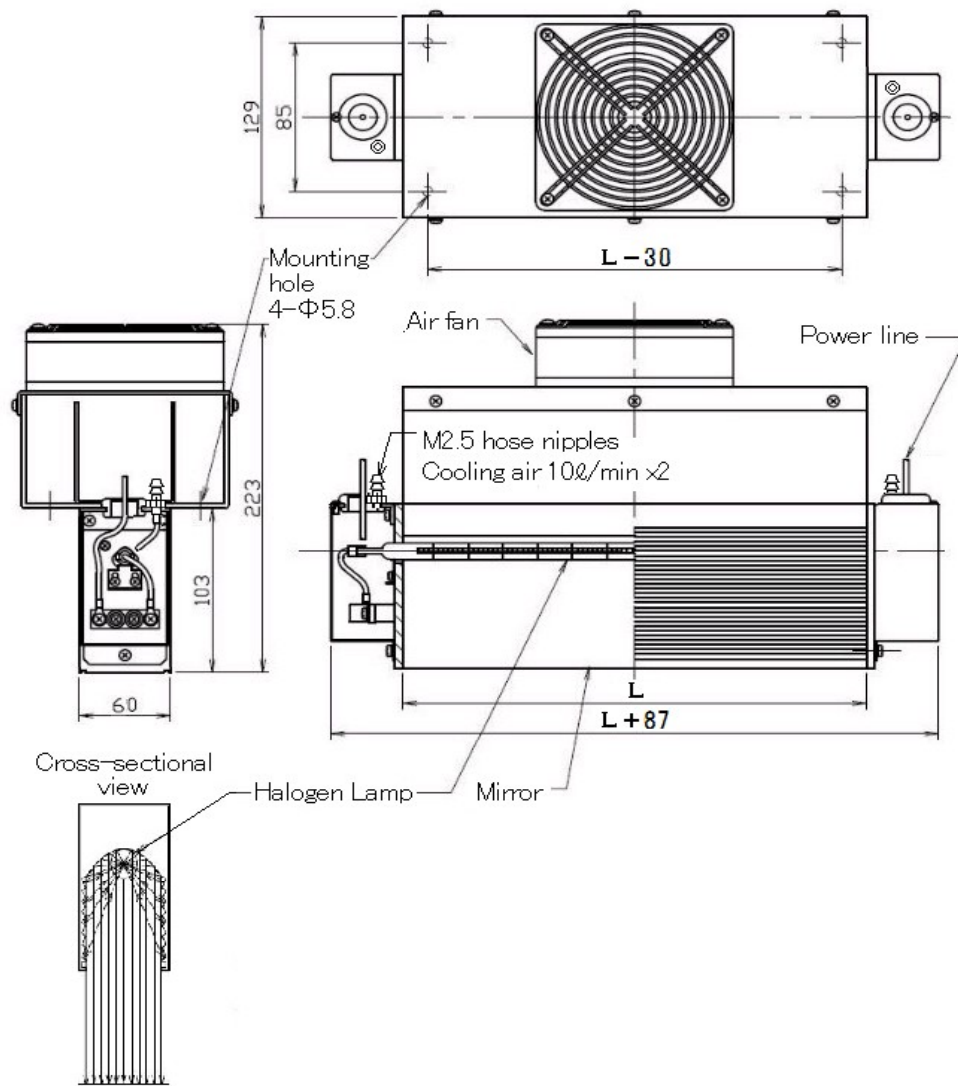
(Example of lab kit assembly.)

(※The lab kit is delivered as individual components.)

- ① Halogen Line Heater HLH-60A/f ∞ /200v-2kw
The output of 2kw, to line heat the surface of the object.
- ② Cubic test stand
- ③ Manual lift.
- ④ Brick, This is useful when heating the test piece.
- ⑤ Safety glasses against high intensity light
It can visually check the high-intensity irradiation point at maximum output.
- ⑥ Manual variable power supply HCV-AC200-240V/-AC200V-2KW
By varying AC0 - 200v in volume, user can adjust the heating output.

【 Lab-kit Actual wiring diagram 】





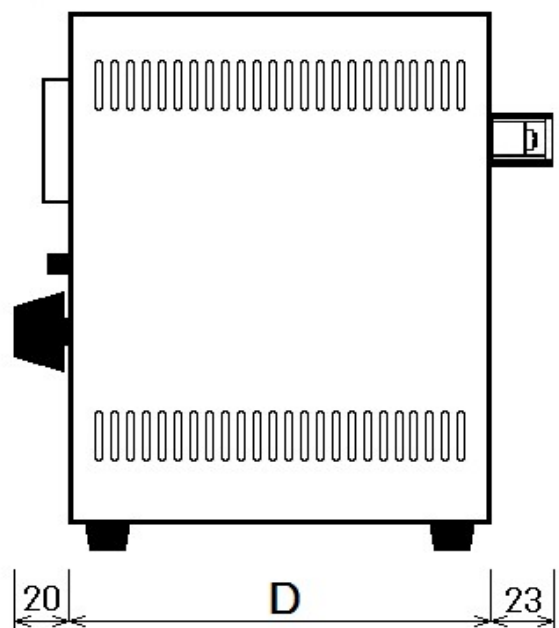
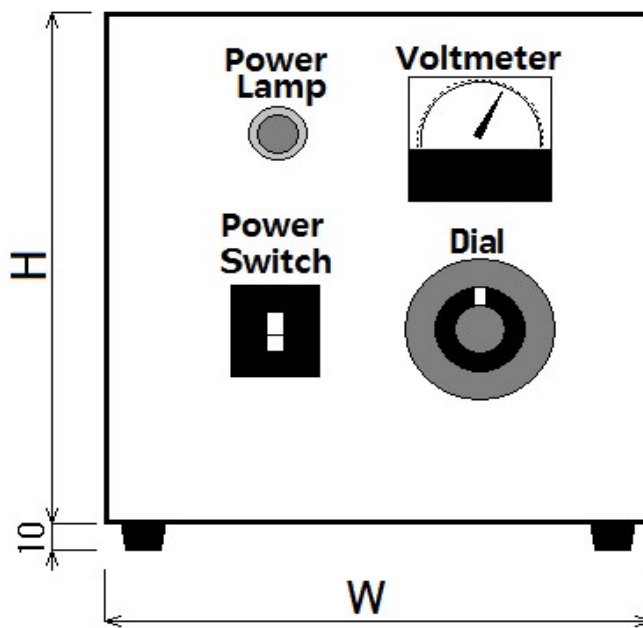
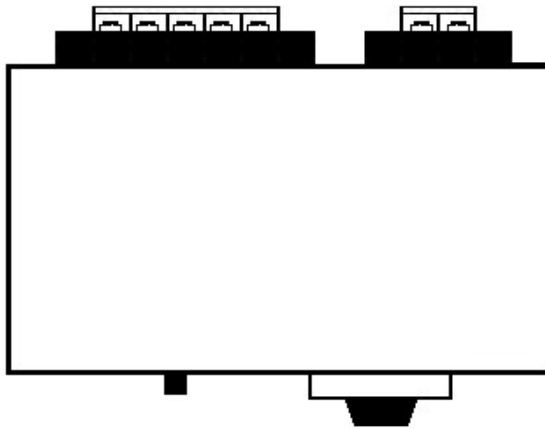
【Note】

- ① Please install the parallelism within $\pm 3^\circ$.
- ② Please use Vertical Lamp when installed in the parallelism over ± 3 , and used vertically.
- ③ Please do not give vibration, tungsten filament of high fever is fragile.
- ④ Mounting holes will vary depending on length mirror.
- ⑤ Air cooling effect is reduced in the location of the high temperature, at such time please use the HLH-60W Water-cooled type.

Focus	$f\infty$ (Parallel Beam)
Mirror Length (L)	280
Voltage	200v
Power	2kw
D/#	HLH-60A/ $f\infty$ /L280/200v-2kw/ACfan
Model	Air Cool Parallel Beam Type Halogen Line Heater

Date 2007/11/21 Design Y.Shimoda

Heat-tech Co.,Ltd.



Input (V)	AC220V
Output (V)	AC0~200V
Output (W)	5KW
Air cooling	AC220V
Height (H)	250
Width (W)	250
Depth (D)	120
D/#	HCVAC-220V/200V-5kw
Model	Equipped with AC terminal for air cooling Manual Power Controller for Halogen Heater

Date 2017.4.4

Heat-tech

No-touch High Temperatures Hating

Heat-tech

Heat-tech Co., Ltd.

<https://heater.heat-tech.biz/>

International Medical Device Alliance IMDA

1-6-5 Minatojima Minamimachi Chuoku Kobe 650-0047 Japan

TEL 81-78945-7894 FAX 81-78945-7895

E-mail info@heat-tech.biz