

Halogen Point Heater Laboratory-kit

LKHPH-120FA/f45/100v-1kw + HCVD

Max.Temp.1400°C

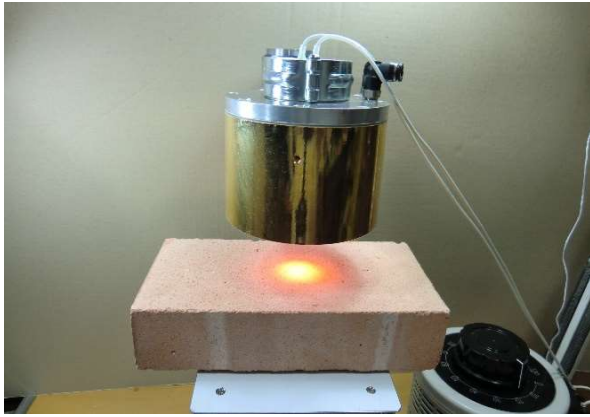
Easily heating high temperatures!



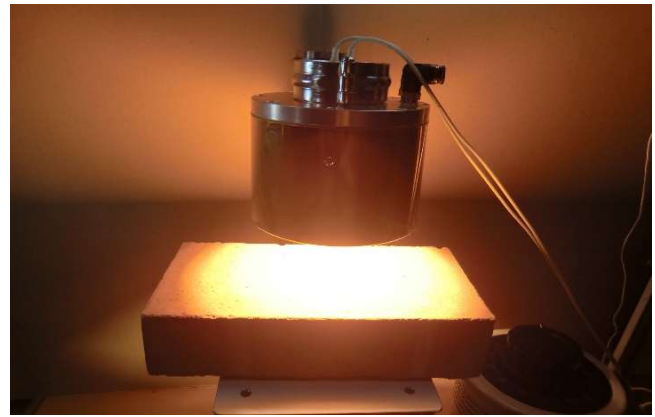
◆ **Feature** ◆

- 1). Easily heating high temperatures by the kit !
- 2). Easily heating 1300°C case by max.temperature.
- 3). Easily adjusting the radiation diameter (focal size) by manual lift!
- 4). Easily changing the heat power (wattage) by slide transformer !

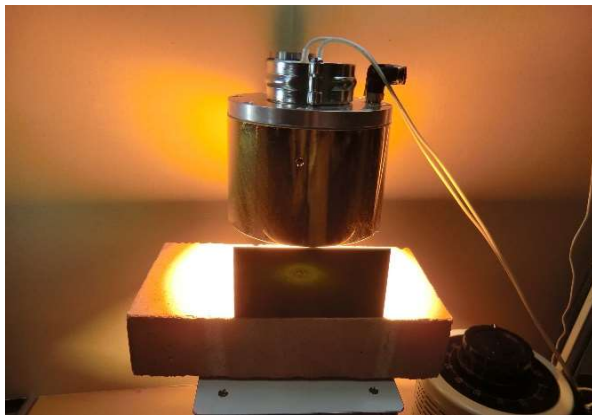
Heat-tech



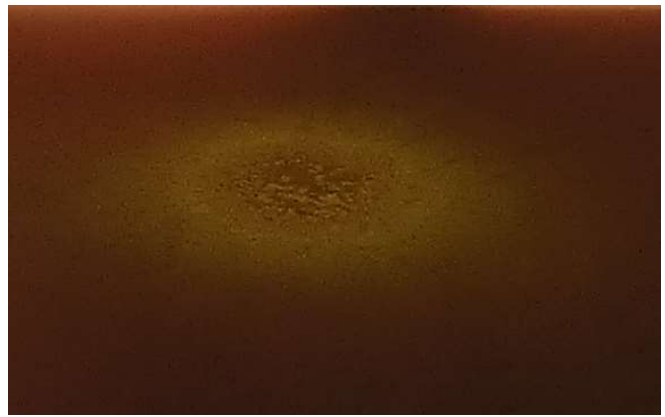
【 Power : 20v/about26w 】
The output was adjusted to 10v
by the slide transformer.
It can visually check the rated
point in diameter $\Phi 21$ of 26w.



【 Power : 200v/1Kw 】
It shine so very bright emission of heat
generation 1Kw maximum output.
The diameter of a rated point
cannot be visually checked.



【 Power : 200v/1Kw Used the protective glass】
Then attached protective glasses are used,
positioning of an irradiation point can be performed easily visually.
It will see the scorch of refractory bricks.



【Enlarged photograph the scorch of bricks】



【 The scorch of refractory bricks 】

It is also a high-power burn refractory bricks.

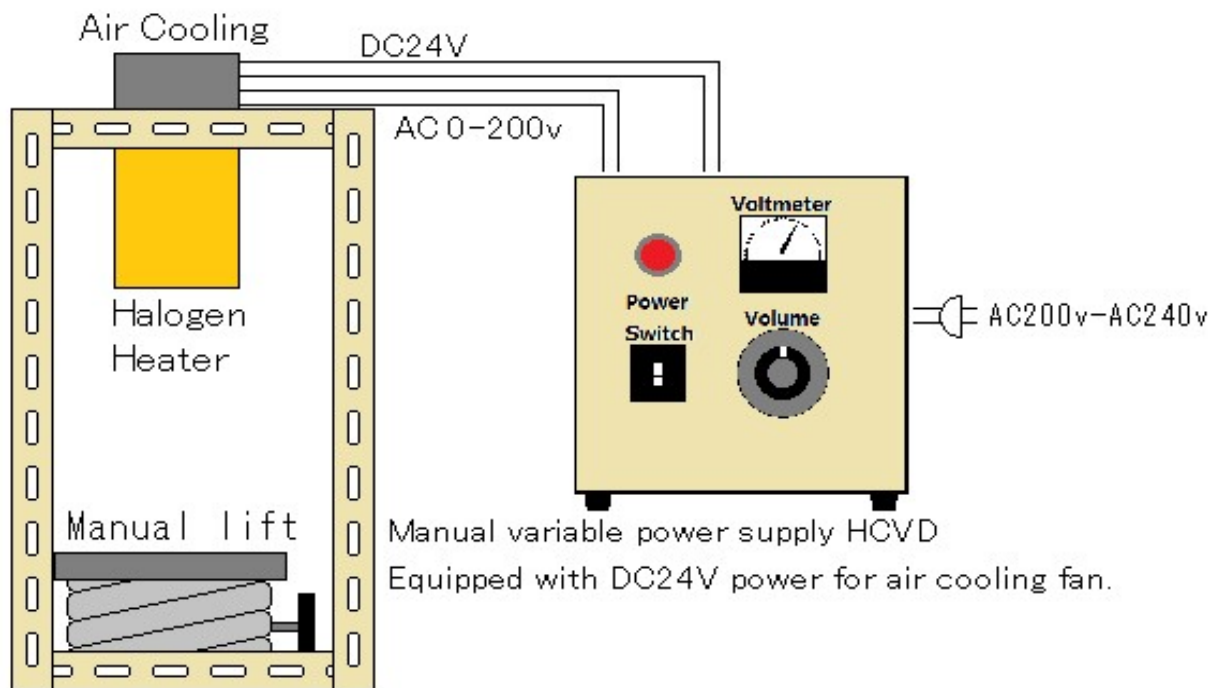


Example of lab kit assembly.

(※The lab kit is delivered as individual components.)

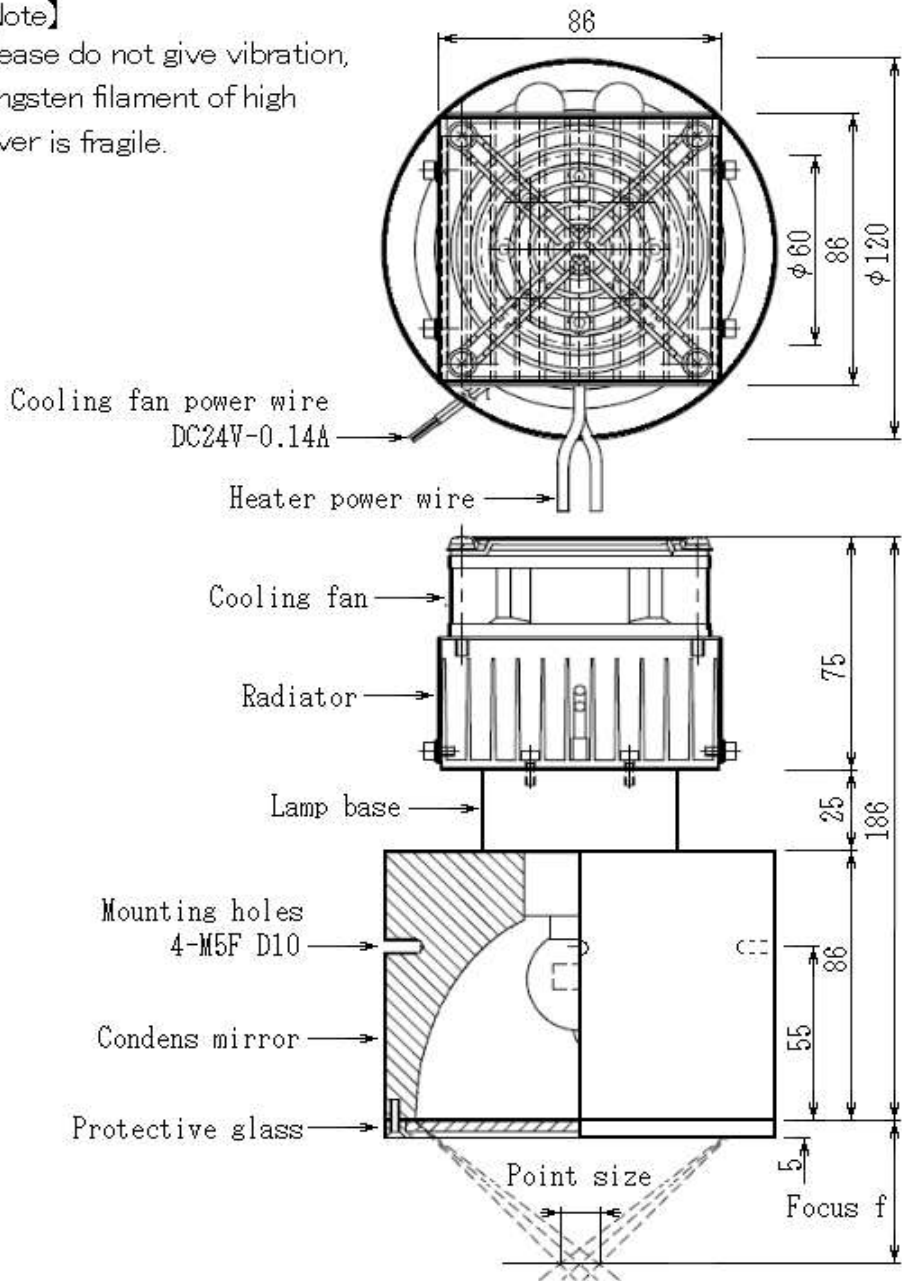
- ① Test Stand
- ② Halogen Point Heater HPH-120FA/f45/200v-1Kw/GW
High power of 1Kw is condensed into Φ 21, heating the object.
- ③ Refractory bricks
This is useful when you put the sample.
- ④ Manual lift. Up and down 80 mm by 16 rotating knobs, the accuracy is 0.5 mm.
Platform surface is 100mm x 100mm,
54mm the initial height, 134mm maximum height, 80mm height adjustable.
- ⑤ Safety glasses against high intensity light
It can visually check the high-intensity irradiation point at maximum output.
- ⑥ Manual variable power supply HCVD-AC200-240V/-AC200V-4KW
By varying the AC200-240v to AC0 – 200v in volume, user can adjust the heating output.
(When input power 240v varying 0-240v)
Equipped with DC24V power for air cooling fan.

【 Lab-kit Actual wiring diagram 】



【Note】

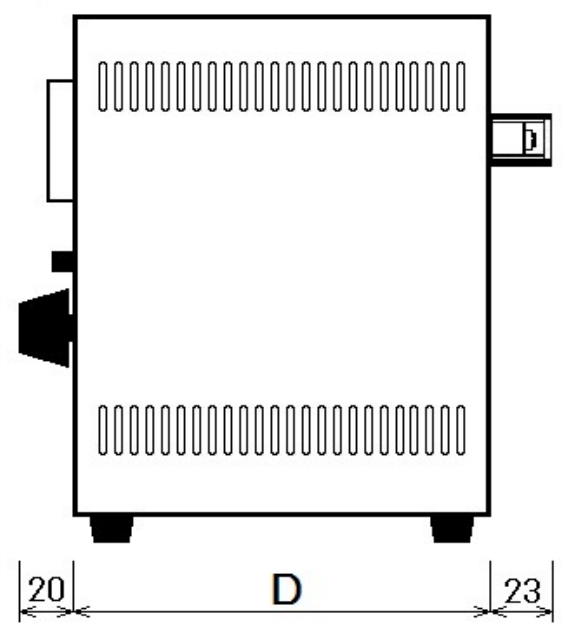
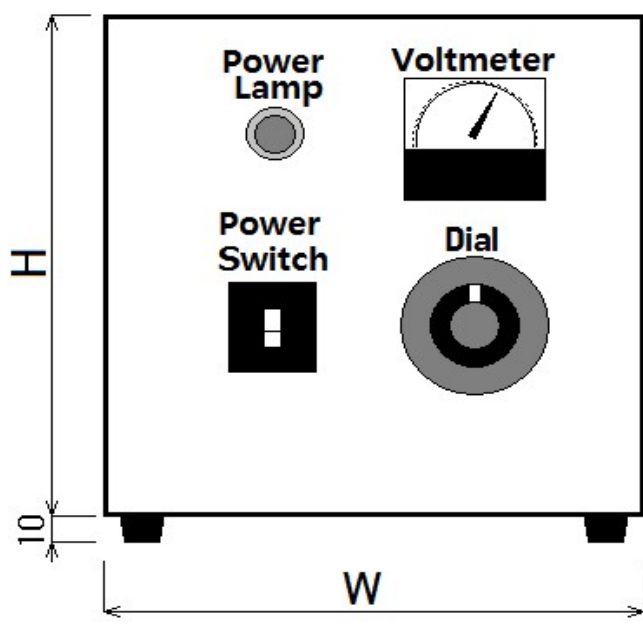
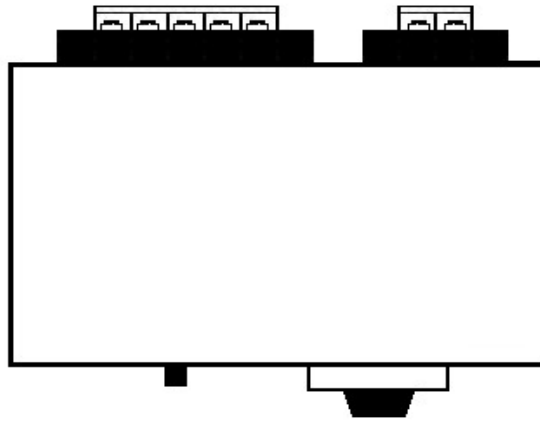
Please do not give vibration,
tungsten filament of high
fever is fragile.



Focus (mm)	45
Point size	≒ Φ18
Voltage Power Life	AC200v-1 kw-800h
D/#	HPH-120FA/f45/200v-1kw
Model	Fan air cooling type Halogen Point Heater

Date	2018/5/1	Design	Y.Shimoda
------	----------	--------	-----------

Heat-tech



Input (V)	AC220V
Output (V)	AC0~200V
Output (W)	5KW
DC Power	DC24V 0.5A
Height (H)	250
Width (W)	250
Depth (D)	120
D/#	HCVD-220V/200V-5kw
Model	DC power supply built-in for air cooling Manual Power Controller for Halogen Heater

Date 2017.4.4

Heat-tech

No-touch High Temperatures Hating

Heat-tech

Heat-tech Co., Ltd.

<https://heater.heat-tech.biz/>

International Medical Device Alliance IMDA

1-6-5 Minatojima Minamimachi Chuoku Kobe 650-0047 Japan

TEL 81-78945-7894 FAX 81-78945-7895

E-mail info@heat-tech.biz